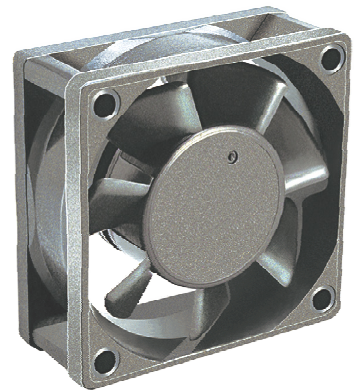


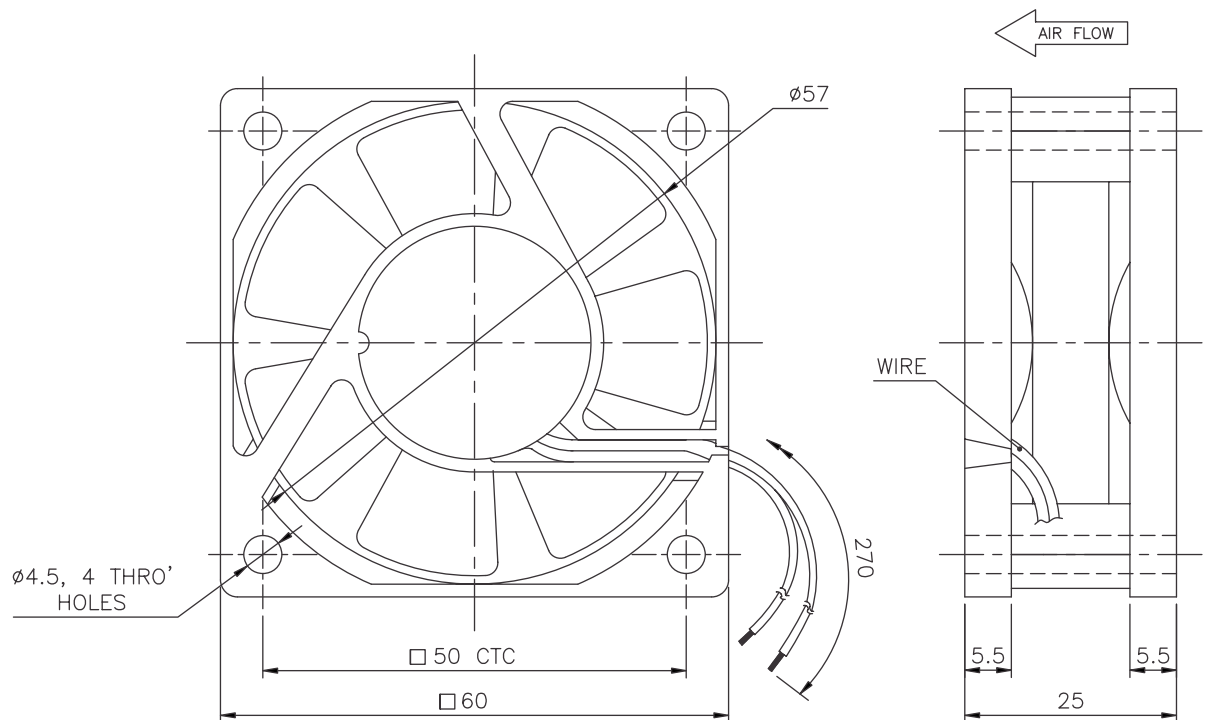
60 x 60 x 25 mm

- Motor Design : DC Brushless Motor
- Housing : Thermoplastic PBT (UL 94V-0)
- Impellor : Thermoplastic PBT (UL 94V-0)
- Bearing : Sleeve or Ball
- Motor Protection : Reverse Polarity Protected & Locked Rotor
- Operating Temperature : - 10 to + 70°C
- Net Weight : 62 Grams



Specification

Model	Part Code	Bearing	Voltage	Current	Input Power	Speed	Air Flow	Static Pressure	Noise	Box Packing
REC			V	A	W	RPM	CFM	mm H ₂ O	dB(A)	Nos.
6025 A12 W	DC051	Sleeve	12	0.10	1.2	3950	20	3.8	27	10
6025 A24 W	DC052	Sleeve	24	0.07	1.7	4200	20	3.8	27	10



* Specifications Subject to Change Without Notice