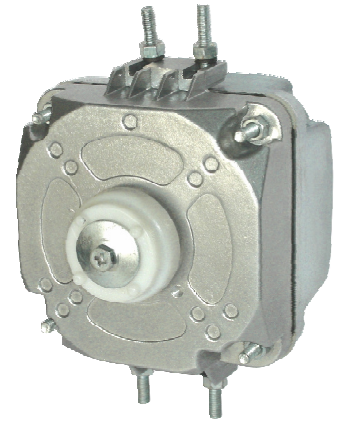




EC Motor

Motor Design	: EC Technology
Housing	: Aluminium Die-cast
Bearing	: Ball Bearing
Operating Voltage	: 230V (185 - 245 VAC)
Dielectric Strength	: AC 500V for 1 minute
Insulation	: Class F
Insulation Resistance	: Above 10M Ohms at 500 VDC
Connection	: Lead Wire
Mounting	: Any Position
Motor Protection	: Via Electronics
Direction of Rotation	: CCW
Operating Temperature	: - 40 to + 40°C
Net Weight	: 610 Grams

Model No. :- EC - 3612 - B2



Specification

Model	Code No.	Fan Blade	Angle Degree	Voltage	Frequency	Current	Input Power	Speed	Air Flow	Box Packing
REC		Ø		V	Hz	A	W	RPM	CFM	Nos.
EC - 3612 B2	EC001	200	28°	230	50 / 60	0.060	6.0	1300	250	20
		200	34°	230	50 / 60	0.080	8.5	1300	290	
		230	22°	230	50 / 60	0.070	7	1300	325	
		230	28°	230	50 / 60	0.105	11.5	1300	450	
		230	34°	230	50 / 60	0.130	15.0	1300	470	
		254	22°	230	50 / 60	0.100	11	1300	440	

Note : B = Ball Bearing 2 = 230 Volt

